

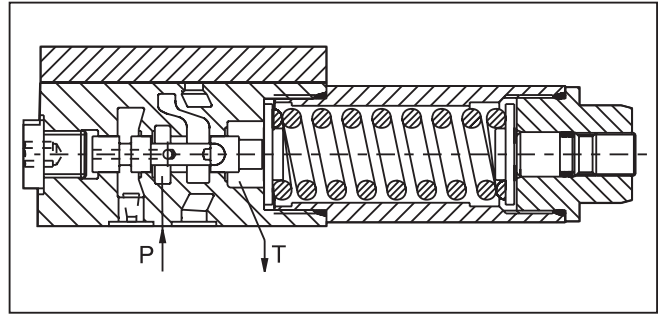
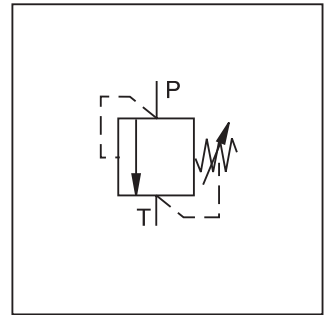
Technical Information

General Description

Series VS pressure relief valve is a direct operated spool valve for subplate mounting with internal drain to port T. The connection and function is according to ISO 6264.

Specifications

Size	NFPA D03 / NG6
Mounting Interface	ISO 6264
Mounting Position	Unrestricted
Ambient Temperature Range	-20°C to +70°C (-4°F to +158°F)
Working Pressure	Port P: 350 Bar (5075 PSI) Port T: depressurized
Pressure Range	25 Bar (363 PSI) 64 Bar (928 PSI) 160 Bar (2320 PSI) 210 Bar (3045 PSI) 350 Bar (5075 PSI)
Nominal Flow	25 LPM (6.6 GPM)
Pressure Fluid	Hydraulic oil as per DIN 51524 ... 525
Fluid Temperature Recommended Permitted	+30°C to +50°C (+86°F to +122°F) -20°C to +70°C (-4°F to +158°F)
Viscosity Recommended Permitted	30 to 50 cSt/mm ² /s (139 to 232 SSU) 20 to 380 cSt / mm ² /s (93 to 1761 SSU)
Filtration	ISO 4406 (1999), 18/16/13



Features

- Spool type valve
- Manifold mounting
- 5 pressure ranges
- 2 adjustment modes

Ordering Information

<div style="border: 1px solid black; padding: 2px; width: 30px; margin: 0 auto;">VS</div> <p>Pressure Relief Valve</p>	<div style="border: 1px solid black; width: 30px; height: 30px; margin: 0 auto;"></div> <p>Pressure Range</p>	<div style="border: 1px solid black; padding: 2px; width: 30px; margin: 0 auto;">A</div> <p>Adjustment Screw with Hexagon Socket</p>	<div style="border: 1px solid black; padding: 2px; width: 30px; margin: 0 auto;">06</div> <p>Size</p>	<div style="border: 1px solid black; padding: 2px; width: 30px; margin: 0 auto;">V</div> <p>Seal Fluorocarbon</p>	<div style="border: 1px solid black; width: 30px; height: 30px; margin: 0 auto;"></div> <p>Gage Port</p>	<div style="border: 1px solid black; width: 30px; height: 30px; margin: 0 auto;"></div> <p>Lock</p>	<div style="border: 1px dashed black; width: 30px; height: 30px; margin: 0 auto;"></div> <p>Design Series NOTE: Not required when ordering.</p>																								
<table border="0"> <thead> <tr> <th>Code</th> <th>Description</th> </tr> </thead> <tbody> <tr><td>025</td><td>25 Bar (363 PSI)</td></tr> <tr><td>064</td><td>64 Bar (928 PSI)</td></tr> <tr><td>160</td><td>160 Bar (2320 PSI)</td></tr> <tr><td>210</td><td>210 Bar (3045 PSI)</td></tr> <tr><td>350</td><td>350 Bar (5075 PSI)</td></tr> </tbody> </table>	Code	Description	025	25 Bar (363 PSI)	064	64 Bar (928 PSI)	160	160 Bar (2320 PSI)	210	210 Bar (3045 PSI)	350	350 Bar (5075 PSI)	<table border="0"> <thead> <tr> <th>Code</th> <th>Description</th> </tr> </thead> <tbody> <tr><td>06</td><td>NFPA D03 / NG6</td></tr> </tbody> </table>	Code	Description	06	NFPA D03 / NG6	<table border="0"> <thead> <tr> <th>Code</th> <th>Description</th> </tr> </thead> <tbody> <tr><td>G</td><td>BSPP 1/4"</td></tr> <tr><td>M</td><td>M 12x1.5</td></tr> </tbody> </table>	Code	Description	G	BSPP 1/4"	M	M 12x1.5	<table border="0"> <thead> <tr> <th>Code</th> <th>Description</th> </tr> </thead> <tbody> <tr><td>Omit</td><td>Normal</td></tr> <tr><td>Z</td><td>Cylinder Lock</td></tr> </tbody> </table>	Code	Description	Omit	Normal	Z	Cylinder Lock
Code	Description																														
025	25 Bar (363 PSI)																														
064	64 Bar (928 PSI)																														
160	160 Bar (2320 PSI)																														
210	210 Bar (3045 PSI)																														
350	350 Bar (5075 PSI)																														
Code	Description																														
06	NFPA D03 / NG6																														
Code	Description																														
G	BSPP 1/4"																														
M	M 12x1.5																														
Code	Description																														
Omit	Normal																														
Z	Cylinder Lock																														

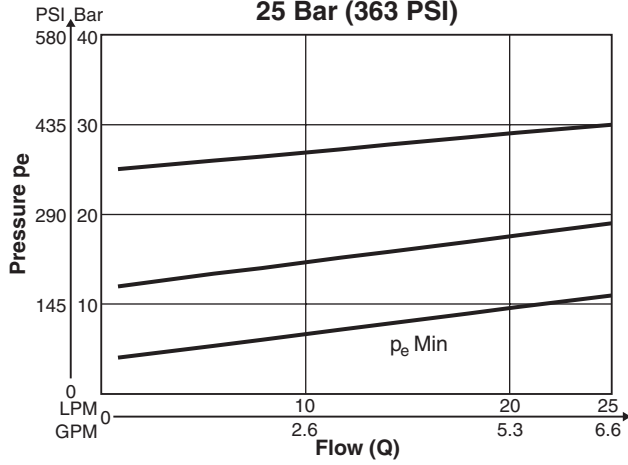
Weight: 1.3 kg (2.9 lbs.)

WARNING: This product can expose you to chemicals including Lead, Nickel (Metallic), or 1,3-Butadiene which are known to the State of California to cause cancer, and Lead or 1,3-Butadiene which is known to the State of California to cause birth defects and other reproductive harm. For more information go to www.P65Warnings.ca.gov.

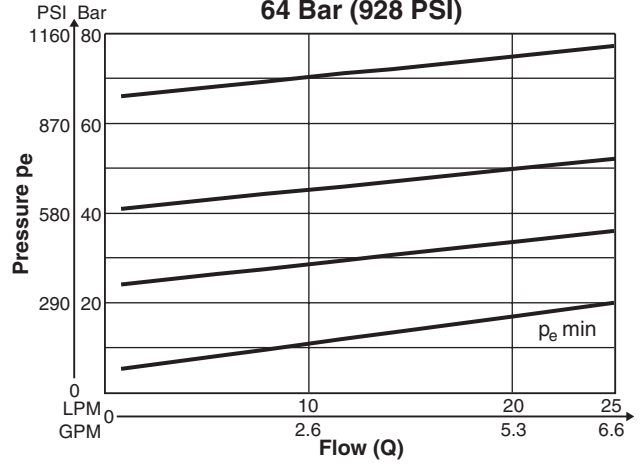


Performance Curves

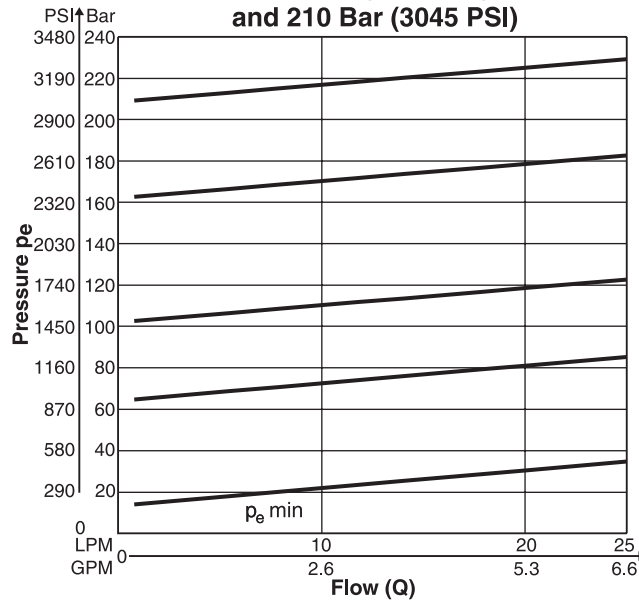
Maximum Setting Pressure
25 Bar (363 PSI)



Maximum Setting Pressure
64 Bar (928 PSI)



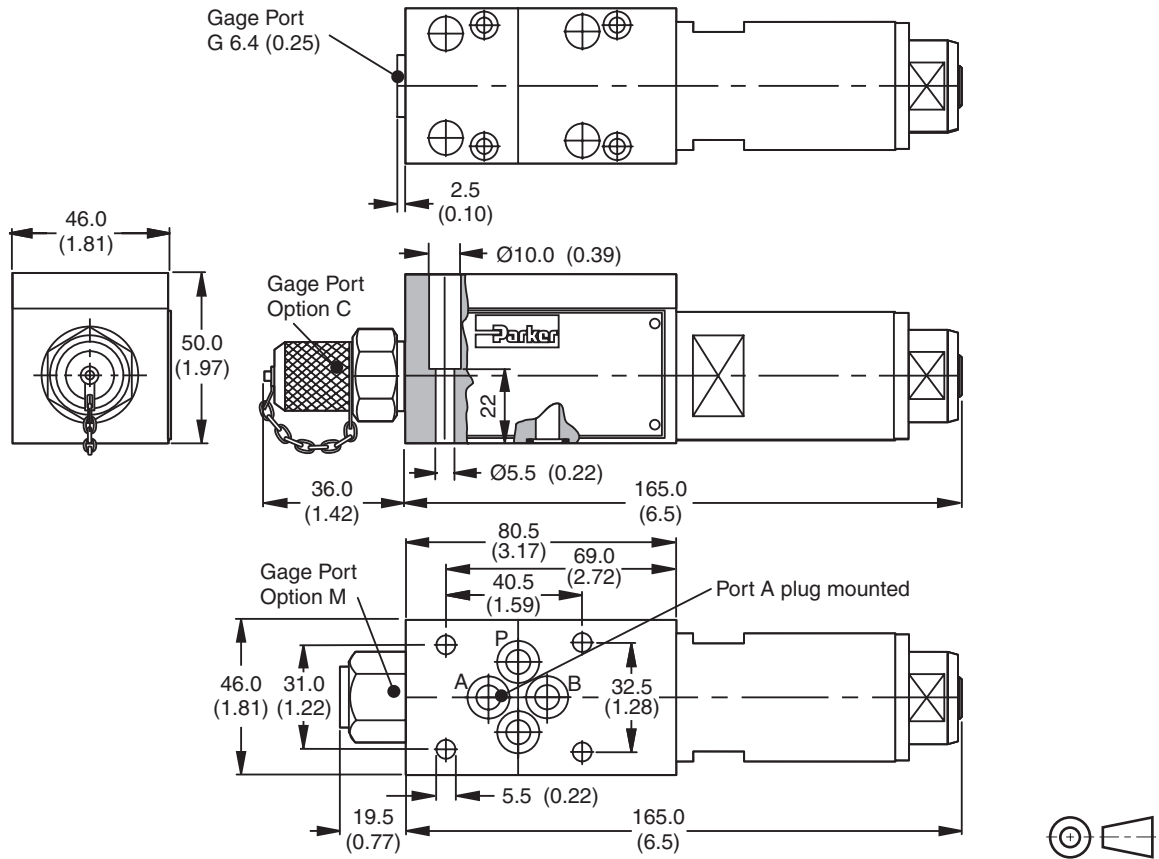
Maximum Setting Pressures
160 Bar (2320 PSI)
and 210 Bar (3045 PSI)




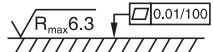


D

Dimensions

Inch equivalents for millimeter dimensions are shown in (**)



Surface Finish	Bolt kit  DIN912 12.9		Seal  Kit Fluorocarbon
	M5x30-4pcs	8.1Nm (6.0 lb.-ft.)	SK-VB/VM/VS V

Mounting Pattern ISO 6264-03-04-*-97
(NFPA D03, CETOP 3, NG6)

Inch equivalents for millimeter dimensions are shown in (**)

